



SPRING

17



SOFTBALL

2017



SPRING 2017 SOFTBALL

SPRING 2017 SOFTBALL

4	SOFTBALL	48	SOFTBALL SPECIAL ORDER
8	SOFTBALL LINE DRIVE PROGRAM	54	SOFTBALL BASE HIT PROGRAM
22	SOFTBALL SUBLIMATION	56	SOFTBALL STOCK

Color and Fabric Guide

Fabric #	Baseball Grey	Black	Burnt Orange	Cardinal	Columbia Blue	Dark Green	Giants Cream	Gold	Grid Iron Silver	GT Gold	Kelly	Maroon	Navy	Purple	Royal	Stealth	True Red	White
47			N/A		N/A			N/A	N/A	N/A								
72							N/A											
VT							N/A											
LG								N/A										

53 CLOTH COLORS: Grey w/Purple (GPZ), Grey w/Royal (GEZ), Grey w/Black (GBZ), Grey w/Dark Green (GDZ), Grey w/Navy (GNZ), White w/Dark Green (WDZ), White w/Purple (WPZ), White w/Maroon (WOZ), White w/Black (WBZ), White w/Navy (WNZ), White w/Royal (WRZ), White/True Red (WZZ)

Fabric #	Description
47	Heavyweight Stretch Double Knit. 100% Nylon, 8.8 oz. sq. yd.
53	Engineered Pinstripe Warp Knit. 100% Polyester. 8.0 oz. sq. yd.
72	Dri-Power® 90% Nylon/10% Spandex - Colors 7.2 oz. sq. yd. Dri-Power® 91% Polyester/9% Spandex - White 6.8 oz. sq. yd.
VT	Dri-Power® 92% Nylon Mesh/8% Spandex - Colors 6.9 oz. sq. yd. Dri-Power® 92% Polyester Mesh/8% Spandex - White 6.9 oz. sq. yd.
LG	100% Polyester Stretch Double Knit. 7.5 oz. sq. yd.

Decoration Color Guide

	Air Force Blue	Aqua	Baseball Grey	Black	Blazer Gold	Burnt Orange	Cardinal	Columbia Blue	Dark Green	Diamond Pink	Eagle Grey	Football Silver	Gold	GT Gold	Grid Iron Silver	Kelly	Light Blue	Light Old Gold	Light Orange	Marlin Aqua	Maroon	Metallic Gold	Metallic Silver	Navy	Old Gold	Purple	Royal	Seal Brown	Soul Blue	Stealth	Texas Orange	True Red	Vegas Gold	White	
RUSSCOTE																	N/A																		
PRO TWILL																	N/A							N/A											

Team / Fashion Colors Sublimation Guide (Baseball, Softball, Track, and Performance)

	TEAM COLORS																	FASHION COLORS																
	Aqua	Baseball Grey	Black	Blazer Gold	Burnt Orange	Cardinal	Columbia Blue	Dark Green	Giants Cream	Gold	Grid Iron Silver	GT Gold	Kelly	Light Old Gold	Light Orange	Maroon	Navy	Purple	Royal	Seal Brown	Soul Blue	Stealth	Texas Orange	True Red	White	Army Camo Green	Army Camo Grey	Army Camo Tan	Watermelon Pink	Diamond Pink	Electric Green	Lavender Haze	Laser Yellow	Techno Green
SUB COLORS																																		
TONAL COLOR 1																										N/A	N/A	N/A						

These colors are only offered in sublimated garments.

FABRIC #	DESCRIPTION
DP	100% Polyester 4.0 oz. sq. yd - White Only
72	91% Polyester/9% Spandex 7.2 oz. sq. yd - White Only
V2	92% Polyester/8% Spandex 5.5 oz. sq. yd. - White Only
VT	92% Polyester/8% Spandex 6.9 oz. sq. yd - White Only

FABRIC #	DESCRIPTION
S2	92% Polyester/8% Spandex 6.9 oz. sq. yd - White Only
JA	100% Polyester Mesh 7.4 oz. sq. yd - White Only
VH	72% Polyester/28% Spandex Mesh 5.3 oz. sq. yd - White Only

SOFTBALL



LINE DRIVE



SUBLIMATION



SPECIAL ORDER



STOCK

THE HOT STOVE



**FULL BUTTON
SUBLIMATED JERSEY**



PAGE 103

**V-NECK
SUBLIMATED JERSEY**



PAGE 113

RUSSELL ATHLETIC



SLEEVELESS SUBLIMATED JERSEY



PAGE 116

SUBLIMATED TWO BUTTON PLACKET JERSEY



PAGE 109

2017 WOMEN'S LINE DRIVE

MODIFIED CUSTOM PROGRAM

ORDER DEADLINE:

Order by: 11/21/2016
Ship by: 1/16/2017

Order by: 1/30/2017
Ship by: 3/13/2017

NEW ORDERS:

15 pieces per style, color and decoration

DECORATION:

JERSEYS:

1 or 2 Color Twill (746VTMT Only)

Includes Team Name and Front and Back Numbers

Sublimated Styles: Fully Sublimated, No Patterns

745VTMU: (Single, SUM736, Williamsport Razzle, and Stadium)

756S2MU: (Hit and Run, Curve Ball, and Option-Ground Rule)

7D7S2MU: (SUM7D3, Homeplate, and Option-Triple Crown)

FONTS - Team Name available in Script w/ Tailsweep, Script, Full Block, Rock, Stinger

Numbers available in Full Block, Rock, Stinger

Placements:

Team Name Placements: 7N or 8

Numbers: 4" Front Number PL# 10 or #11 and 8" Back Number PL# 6

PROMOTIONS:

For every jersey purchased team will receive a **FREE 316KWK**.



746VTMT



**CONTACT YOUR RTS DEALER FOR
PRICING AND PROMOTIONS.**

WILLIAMSPORT RAZZLE
745VTMU



STADIUM
745VTMU



SUM736
745VTMU



SINGLE
745VTMU



OPTION-GROUND RULE
756S2MU



HIT AND RUN
756S2MU



CURVE BALL
756S2MU



SUM7D3
7D7S2MU



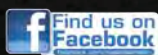
HOME PLATE
7D7S2MU



OPTION-TRIPLE CROWN
7D7S2MU



SPECIAL PACKAGED PRICING OFFERED BY
RUSSELL TEAM SPECIALIST RTS DEALERS ONLY.





Jersey: 746VTMT

STEPS:

- Step 1 - Body / Sleeves (Gold)
- Step 2 - Shoulder Inserts and Side Inserts (Royal)
- Step 3 - Braid (Royal)

Shown with 738LGXK Pant

See page 21 for style and program details



WILLIAMSPORT RAZZLE

Jersey: 745VTMU



STEPS:

Step 1 - Body / Sleeves (Kelly)

Step 2 - Piping (White)

Step 3 - Sleeve and Body Insert Design (Kelly Tonal)

Step 4 - Side Insert / Sleeve Stripe (Burnt Orange)

Shown with 739LGMP Pant

See page 21 for style and program details

WOMEN'S LINE DRIVE





STADIUM

Jersey: 745VTMU



STEPS:

Step 1 - Body / Sleeves (Navy)

Step 2 - Inside Stripe (White)

Step 3 - Outside Stripes (Burnt Orange)

Shown with 738LGXK Pant

See page 21 for style and program details



SUM736

Jersey: 745VTMU

STEPS:

Step 1 - Body & Lower Sleeves (Navy)

Step 2 - Upper Sleeves and Underarm Inserts (Light Old Gold)

Step 3 - Piping (White)

Shown with 727LGMP Pant

See page 21 for style and program details



WOMEN'S LINE DRIVE





SINGLE

Jersey: 745VTMU

STEPS:

Step 1 - Body (White)

Step 2 - Sleeves (Aqua)

Step 3 - Around Neck, Down Front & Sleeve Stripes (Black)

Shown with 739LGMP Pant

See page 21 for style and program details



OPTION - GROUND RULE

Jersey: 756S2MU



STEPS:

- Step 1 - Front Body (Gold)
- Step 2 - Back Body (Gold)
- Step 3 - Sleeves (Gold)
- Step 4 - Top Sleeve Stripes (Dark Green)
- Step 5 - Bottom Sleeve Stripes (Dark Green)

Shown with 738LGXK Pant

See page 21 for style and program details

WOMEN'S LINE DRIVE





HIT AND RUN

Jersey: 756S2MU



STEPS:

- Step 1 - Body (Watermelon Pink)
- Step 2 - Sleeve and Back Insert - Pattern (Baseball Grey)
- Step 3 - Side Insert (Black)

Shown with 738LGXK Pant

See page 21 for style and program details



CURVE BALL

Jersey: 756S2MU



STEPS:

- Step 1 - Body / Sleeves (Royal)
- Step 2 - Shoulder Inserts - Pattern (Gold)
- Step 3 - Top Body Piping (Royal)
- Step 4 - Bottom Body Piping (White)

Shown with 738LGMP Pant

See page 21 for style and program details

WOMEN'S LINE DRIVE





SUM7D3

Jersey: 7D7S2MU



STEPS:

Step 1 - Body (Black)

Step 2 - Neck / Sleeves / Upper Insert (Gold)

Step 3 - Piping (White)

Shown with 738LGXK Pant

See page 21 for style and program details



HOME PLATE

Jersey: 7D7S2MU



STEPS:

- Step 1 - Body (Royal)
- Step 2 - Sleeves / Neck (Burnt Orange)
- Step 3 - Piping / Chevron 2 & 4 (Burnt Orange)
- Step 4 - Chevron 1 & 3 (White)

Shown with 72447LP Pant

See page 21 for style and program details

WOMEN'S LINE DRIVE





OPTION - TRIPLE CROWN

Jersey: 7D7S2MU



STEPS:

- Step 1 - Front Body (Navy)
- Step 2 - Back Body (Navy)
- Step 3 - Sleeves / Stripes (Navy)
- Step 4 - Top Sleeve Stripes (White)
- Step 5 - Bottom Sleeve Stripes (GT Gold)

Shown with 738LGXK Pant

See page 21 for style and program details



WOMEN'S LINE DRIVE STYLE DETAILS

<p>Jerseys Sizes: S-XXL Oversize: 3XL 10% upcharge for 3XL</p> <p>**Refer to page 1 for fabric content and color options.</p>	<p>746VTMT</p> <ul style="list-style-type: none"> •Two button placket jersey •“Diamond Fit” jersey •Set-in sleeves with mesh in the back •Side inserts for better movement during play •Curved hemmed bottom with extended tail •4 Side sew label lower left front •“R RUSSELL” right front chest •Imported 	<p>745VTMU</p> <ul style="list-style-type: none"> •Faux placket pullover jersey •Set in sleeves •Tapered waist and curved hemmed bottom •4 Side sew label lower left front •“R RUSSELL” right front chest •Imported 	<p>756S2MU</p> <ul style="list-style-type: none"> •Two button placket jersey with set in sleeves •Curved hemmed bottom •4 Side sew label lower left front •“R RUSSELL” right front chest •Imported 	<p>7D7S2MU</p> <ul style="list-style-type: none"> •Raglan sleeves •Self-material mitered V-neck •4 Side sew label lower left front •“R RUSSELL” right front chest •Imported
Placements	7 or 8, 10 or 11, and 6	7 or 8, 10 or 11, and 6	7 or 8, 10 or 11, and 6	7 or 8, 10 or 11, and 6
Decoration Type	Twill (1 or 2 Color)	Sublimation Only	Sublimation Only	Sublimation Only
<p>Pants Sizes: S-XXL Oversize: 3XL (Only in the 727) 10% upcharge for 3XL</p> <p>**Refer to page 1 for fabric content and color options.</p>	<p>739LGMP</p> <ul style="list-style-type: none"> •Mesh inserts for breathability and better range of motion •Low rise to hit 2” below the natural waist •Two snap closure with brass zipper •Two set in rear pockets •Double knees •Open bottom pant hemmed leg opening •Inseam must be specified, 17”-33” with or without elastic •“R RUSSELL” back left hip •Imported 		<p>727LGMP</p> <ul style="list-style-type: none"> •Contrasting side inserts with 1/8” piping down side seam •2” knit elastic waistband with belt loops and tunnels •Two snap closure with brass zipper and two set in back pockets •Double lined knees •Inseam must be specified, 17”-33” •“R RUSSELL” back left hip Imported 	
Placements	N/A		N/A	
Decoration Type	1/8” braid		N/A	
Jersey Layouts				
Fonts	FULLBLOCK	<i>Script</i>	ROCK	STINGER

WOMEN'S SUBLIMATION

WILLIAMSPORT RAZZLE
page 26

NEW!



STADIUM
page 26

NEW!



OPTION - STITCH
page 27

NEW!



SPLITTER
page 28

NEW!



CURVE BALL
page 28



HIT AND RUN
page 29



SUM736
page 29



CLASSIC DOUBLE
page 30



BASE
page 30



LOYALTY
page 31



SLIDER
page 31



SINGLE
page 31



CUT OFF
page 32



SUM789
page 32



STADIUM
page 33



WILLIAMSPORT RAZZLE
page 33



OPTION - SLUGGER II
page 34



SPLITTER
page 35



CURVE BALL
page 35



WOMEN'S SUBLIMATION

HIT AND RUN
page 36



BASE
page 36



LOYALTY
page 37



ACE
page 37



HOME PLATE
page 38



SUM7D3
page 38



STRIKE ZONE
page 39



BASE
page 39



LOYALTY
page 40



GRAND SLAM
page 40



ACE
page 41

NEW!



GRAND SLAM
page 41



OPTION - TRIPLE CROWN
page 42

NEW!



HOME PLATE
page 43



SUM703
page 43



STRIKE ZONE
page 44



BASE
page 44



LOYALTY
page 45





WILLIAMSPORT RAZZLE

Jersey: 745VTXU (Adult) \$106.00

STEPS:

- Step 1 - Body / Sleeves (Kelly)
- Step 2 - Piping (White)
- Step 3 - Sleeve and Body Insert Design (Kelly Tonal)
- Step 4 - Side Insert / Sleeve Stripe (Burnt Orange)

Shown with 739LGMP Pant

See page 46 for style and pricing details.



STADIUM

Jersey: 745VTXU (Adult) \$106.00

STEPS:

- Step 1 - Body / Sleeves (Navy)
- Step 2 - Inside Stripe (White)
- Step 3 - Outside Stripe (Burnt Orange)

Shown with 738LGXX Pant

See page 46 for style and pricing details.



OPTION - STITCH

Jersey: 745VTXU (Adult) \$106.00

STEPS:

- Step 1 - Front Body (Maroon)
- Step 2 - Back Body (Maroon)
- Step 3 - Sleeves (Black)
- Step 4 - Sleeve Stripe (White)

Shown with 738LGXK Pant

See page 46 for style and pricing details.



SUBLIMATION



OPTION - GROUND RULE

STEPS:

- Step 1 - Front Body (Dark Green)
- Step 2 - Back Body (Dark Green)
- Step 3 - Sleeves (Dark Green)
- Step 4 - Top Sleeve Stripes (Gold)
- Step 5 - Bottom Sleeve Stripes (Gold)

OPTION - TRIPLE CROWN

STEPS:

- Step 1 - Front Body (Purple)
- Step 2 - Back Body (Purple)
- Step 3 - Sleeves / Stripes (Purple)
- Step 4 - Top Sleeve Stripes (White)
- Step 5 - Bottom Sleeve Stripes (GT Gold)

OPTION - SLUGGER II

STEPS:

- Step 1 - Front Body (Electric Green)
- Step 2 - Back Body (Electric Green)
- Step 3 - Sleeves (Purple)
- Step 4 - Outside Stripes (Electric Green)
- Step 5 - Inside Stripe (White)



SPLITTER

Jersey: 745VTXU (Adult) \$106.00

STEPS:

- Step 1 - Body / Sleeves (Black)
- Step 2 - Top Shoulder / Side Inserts (White)
- Step 3 - Lower Shoulder / Inside Side Inserts (Aqua)

Shown with 739LGMP Pant

See page 46 for style and pricing details.



CURVE BALL

Jersey: 745VTXU (Adult) \$106.00

STEPS:

- Step 1 - Body / Sleeves (Royal)
- Step 2 - Shoulder Insert - Pattern (Matrix)
 - Pattern Color 1 - (Gold)
 - Pattern Color 2 - (Gold Tonal)
 - Pattern Color 3 - (N/A)
- Step 3 - Top Body Piping (Royal)
- Step 4 - Bottom Body Piping (White)

Shown with 739LGMP Pant

See page 46 for style and pricing details.

HIT AND RUN

Jersey: 745VTXU (Adult) \$106.00

STEPS:

- Step 1 - Body (Watermelon Pink)
- Step 2 - Sleeve & Back Insert - Pattern (Solid)
 - Pattern Color 1 - (Baseball Grey)
 - Pattern Color 2 - (N/A)
 - Pattern Color 3 - (N/A)
- Step 3 - Side Insert (Black)

Shown with 7S4DBXK Pant

See page 46 for style and pricing details.



SUM736

Jersey: 745VTXU (Adult) \$106.00

STEPS:

- Step 1 - Body / Lower Sleeves (White)
- Step 2 - Upper Sleeves & Underarm Inserts - Pattern (Matrix)
 - Pattern Color 1 - (Purple)
 - Pattern Color 2 - (Gold)
 - Pattern Color 3 - (N/A)
- Step 3 - Piping (Gold)

Shown with 739LGMP Pant

See page 46 for style and pricing details.





CLASSIC DOUBLE

Jersey: 745VTXU (Adult) \$106.00

STEPS:

- Step 1 - Body & Sleeves (Black)
- Step 2 - Around Neck, Down Front, and Top Sleeve Stripe (Gold)
- Step 3 - Around Neck, Down Front and Middle Sleeve Stripe (White)
- Step 4 - Around Neck, Down Front and Bottom Sleeve Stripe (Gold)

*Stripe is 1 inch up from the sleeve end.

Shown with 7S4DBXK Pant

See page 46 for style and pricing details.



BASE

Jersey: 745VTXU (Adult) \$106.00

STEPS:

- Step 1 - Body - Pattern (Solid)
 - a) Pattern Color 1 - (Black)
 - b) Pattern Color 2 - (N/A)
 - c) Pattern Color 3 - (N/A)
- Step 2 - Sleeves - Pattern (Shockwave)
 - a) Pattern Color 1 - (True Red)
 - b) Pattern Color 2 - (Black)
 - c) Pattern Color 3 - (N/A)

Shown with 739LGMP Pant

See page 46 for style and pricing details.

LOYALTY

Jersey: 745VTXU (Adult) \$106.00

STEPS:

- Step 1 - Body & Unity Pattern (True Red)
 - a) WORD 1 (COMPETE)
 - b) WORD 2 (LEGACY)
 - c) WORD 3 (CHAMPIONSHIP)
- Step 2 - Upper Body & Sleeve Gradient (Black)
- Step 3 - Around Neck, Down Front & Sleeve Stripes (Black)

Shown with 739LGMP Pant

See page 46 for style and pricing details.



SLIDER

Jersey: 745VTXU (Adult) \$106.00

STEPS:

- Step 1 - Body / Design (Gold)
- Step 2 - Sleeves (Purple)
- Step 3 - Sleeve Design (White)

Shown with 739LGMP Pant

See page 46 for style and pricing details.



SINGLE

Jersey: 745VTXU (Adult) \$106.00

STEPS:

- Step 1 - Body (White)
- Step 2 - Sleeves (Aqua)
- Step 3 - Around Neck, Down Front and Sleeve Stripe (Black)

Shown with 739LGMP Pant

See page 46 for style and pricing details.





CUT OFF

Jersey: 745VTXU (Adult) \$106.00

STEPS:

- Step 1 - Body (Navy)
- Step 2 - Sleeves (Navy)
- Step 3 - Body Wrap - Pattern (Digital Camo)
 - a) Pattern Color 1 (Navy)
 - b) Pattern Color 2 (True Red)
 - c) Pattern Color 3 (White)
- Step 4 - Insert Points (White)

Shown with 754DBXK Pant

See page 46 for style and pricing details.



SUM7B9

Jersey: 745VTXU (Adult) \$106.00

STEPS:

- Step 1 - Front Body (Maroon)
- Step 2 - Back Body (Maroon)
- Step 3 - Sleeves (Maroon)
- Step 4 - Shoulder Inserts (Royal)
- Step 5 - Front Piping (White)

Shown with 739LGMP Pant

See page 46 for style and pricing details.



STADIUM

Jersey: 756S2XU (Adult) \$68.00
756DPXU (Adult) \$56.00

STEPS:

- Step 1 - Body / Sleeves (White)
- Step 2 - Inside Stripe (White Tonal)
- Step 3 - Outside Stripes (Dark Green)

Shown with 7S4DBXK Pant

See page 46 for style and pricing details.



WILLIAMSPORT RAZZLE

Jersey: 756S2XU (Adult) \$68.00
756DPXU (Adult) \$56.00

STEPS:

- Step 1 - Body / Sleeves (True Red)
- Step 2 - Piping (White)
- Step 3 - Sleeve & Body Insert Design (True Red Tonal)
- Step 4 - Side Insert / Sleeve Stripe (Black)

Shown with 72447LP Pant

See page 46 for style and pricing details.





OPTION - SLUGGER II

Jersey: 756S2XU (Adult) \$68.00
756DPXU (Adult) \$56.00

STEPS:

- Step 1 - Front Body (Purple)
- Step 2 - Back Body (Purple)
- Step 3 - Sleeves (Electric Green)
- Step 4 - Outside Stripes (White)
- Step 5 - Inside Stripe (Purple)

Shown with 738LGXK Pnt

See page 46 for style and pricing details.



OPTION - GROUND RULE

STEPS:

- Step 1 - Front Body (Gold)
- Step 2 - Back Body (Gold)
- Step 3 - Sleeves (Gold)
- Step 4 - Top Sleeve Stripes (Dark Green)
- Step 5 - Bottom Sleeve Stripes (Dark Green)

OPTION - TRIPLE CROWN

STEPS:

- Step 1 - Front Body (Burnt Orange)
- Step 2 - Back Body (Burnt Orange)
- Step 3 - Sleeves / Stripes (Burnt Orange)
- Step 4 - Top Sleeve Stripes (White)
- Step 5 - Bottom Sleeve Stripes (Navy)

OPTION - STITCH

STEPS:

- Step 1- Front Body (Laser Yellow)
- Step 2- Back Body (Laser Yellow)
- Step 3- Sleeves (Navy)
- Step 4- Sleeve Stripe (White)



SPLITTER

Jersey: 756S2XU (Adult) \$68.00
756DPXU (Adult) \$56.00

STEPS:

- Step 1 - Body / Sleeves (Electric Green)
- Step 2 - Top Shoulder / Side Inserts (Burnt Orange)
- Step 3 - Lower Shoulder / Inside Side Inserts (White)

Shown with 739LGMP Pant

See page 46 for style and pricing details.



SUBLIMATION



CURVE BALL

Jersey: 756S2XU (Adult) \$68.00
756DPXU (Adult) \$56.00

STEPS:

- Step 1 - Body / Sleeves (Royal)
- Step 2 - Shoulder Insert - Pattern (Matrix)
 - Pattern Color 1 - (Gold)
 - Pattern Color 2 - (Gold Tonal)
 - Pattern Color 3 - (N/A)
- Step 3 - Top Body Piping (Royal)
- Step 4 - Bottom Body Piping (White)

Shown with 739LGMP Pant

See page 46 for style and pricing details.





HIT AND RUN

Jersey: 756S2XU (Adult) \$68.00
756DPXU (Adult) \$56.00

STEPS:

- Step 1 - Body (Watermelon Pink)
- Step 2 - Sleeve & Back Insert - Pattern (Solid)
 - Pattern Color 1 - (Baseball Grey)
 - Pattern Color 2 - (N/A)
 - Pattern Color 3 - (N/A)
- Step 3 - Side Insert (Black)

Shown with 738LGXK Pant

See page 46 for style and pricing details.



BASE

Jersey: 756S2XU (Adult) \$68.00
756DPXU (Adult) \$56.00

STEPS:

- Step 1 - Body - Pattern (Solid)
 - Pattern Color 1 - (Royal)
 - Pattern Color 2 - (N/A)
 - Pattern Color 3 - (N/A)
- Step 2 - Sleeves - Pattern (Solid)
 - Pattern Color 1 - (Light Orange)
 - Pattern Color 2 - (N/A)
 - Pattern Color 3 - (N/A)

Shown with 739LGMP Pant

See page 46 for style and pricing details.

LOYALTY

Jersey: **756S2XU (Adult) \$ 68.00**
756DPXU (Adult) \$ 56.00

STEPS:

- Step 1 - Body / Unity Pattern (White)
 - a) WORD 1 (BOBCATS)
 - b) WORD 2 (OHIO)
 - c) WORD 3 (TEAM)
- Step 2 - Upper Body / Sleeve Gradient (Dark Green)
- Step 3 - Sleeve Stripes (Dark Green)

Shown with **738LGXK Pant**

See page 46 for style and pricing details.



ACE

Jersey: **7D6S2XU (Adult) \$56.00**
7D6DPXU (Adult) \$51.00
7D6DPGU (Youth) \$44.00

STEPS:

- Step 1 - Body (True Red)
- Step 2 - Center Stripe (White)
- Step 3 - Outside Stripes (Black)

Shown with **72447LP Pant**

See page 47 for style and pricing details.





HOME PLATE

Jersey: 7D6S2XU (Adult) \$56.00
 7D6DPXU (Adult) \$51.00
 7D6DPGU (Youth) \$44.00

STEPS:

Step 1 - Body (Royal)
 Step 2 - Piping / Chevron 2 & 4 (Burnt Orange)
 Step 3 - Chevron 1 & 3 (White)

Shown with 739LGMP Pant

See page 47 for style and pricing details.



SUM7D3

Jersey: 7D6S2XU (Adult) \$56.00
 7D6DPXU (Adult) \$51.00
 7D6DPGU (Youth) \$44.00

STEPS:

Step 1 - Body (Black)
 Step 2 - Upper Insert (Gold)
 Step 3 - Piping (White)

Shown with 738LGXK Pant

See page 47 for style and pricing details.

STRIKE ZONE

Jersey: 7D6S2XU (Adult) \$56.00
7D6DPXU (Adult) \$51.00
7D6DPGU (Youth) \$44.00

STEPS:

- Step 1 - Body (Purple)
- Step 2 - Curved Line Insert (White)
- Step 3 - Side Insert - Pattern (Digital Camo)
 - Pattern Color 1 - (Purple)
 - Pattern Color 2 - (Gold)
 - Pattern Color 3 - (Black)

Shown with 738LGXK Pant

See page 47 for style and pricing details.



SUBLIMATION



BASE

Jersey: 7D6S2XU (Adult) \$56.00
7D6DPXU (Adult) \$51.00
7D6DPGU (Youth) \$44.00

STEPS:

- Step 1 - Body - Pattern (Camo-Kaze)
 - Pattern Color 1 - (Stealth)
 - Pattern Color 2 - (Baseball Grey)
 - Pattern Color 3 - (Black)

Shown with 7S4DBXK Pant

See page 47 for style and pricing details.





LOYALTY

Jersey: 7D6S2XU (Adult) \$56.00
 7D6DPXU (Adult) \$51.00
 7D6DPGU (Youth) \$44.00

STEPS:

- Step 1 - Body, Sleeves and Unity Pattern (True Red)
 - a) WORD 1 - (COMPETE)
 - b) WORD 2 - (LEGACY)
 - c) WORD 3 - (CHAMPIONSHIP)
- Step 2 - Upper Body (Black)

Shown with 72447LP Pant

See page 47 for style and pricing details.



GRAND SLAM

Jersey: 7D6S2XU (Adult) \$56.00
 7D6DPXU (Adult) \$51.00
 7D6DPGU (Youth) \$44.00

STEPS:

- Step 1 - Upper Body (White)
- Step 2 - Bottom Body / Center Stripes (Navy)
- Step 3 - Outer Stripes (GT Gold)

Shown with 738LGXK Pant

See page 47 for style and pricing details.



ACE

Jersey: 7D7S2XU (Adult) \$68.00
 7D7DPXU (Adult) \$55.00
 7D7DPGU (Youth) \$49.00

STEPS:

- Step 1 - Body (Black)
- Step 2 - Sleeves (Aqua)
- Step 3 - Center Stripe / Lower Neck (White)
- Step 4 - Outside Stripes / Upper Neck (Aqua)

Shown with 738LGXK Pant

See page 47 for style and pricing details.



SUBLIMATION



GRAND SLAM

Jersey: 7D7S2XU (Adult) \$68.00
 7D7DPXU (Adult) \$55.00
 7D7DPGU (Youth) \$49.00

STEPS:

- Step 1 - Upper Body (White)
- Step 2 - Bottom Body / Center Stripes / Upper Neck / Sleeves (Navy)
- Step 3 - Outer Stripes / Lower Neck (GT Gold)

Shown with 7S4DBXK Pant

See page 47 for style and pricing details.





OPTION - TRIPLE CROWN

Jersey: 7D7S2XU (Adult) \$68.00
 7D7DPXU (Adult) \$55.00
 7D7DPGU (Youth) \$49.00

- STEPS:
 Step 1 - Front Body (Navy)
 Step 2 - Back Body (Navy)
 Step 3 - Sleeves (Navy)
 Step 4 - Top Sleeve Stripes (White)
 Step 5 - Bottom Sleeve Stripes (GT Gold)

Shown with 738LGXK Pant

See page 47 for style and pricing details.



OPTION - GROUND RULE

- STEPS:
 Step 1 - Front Body (White)
 Step 2 - Back Body (Black)
 Step 3 - Sleeves (Black)
 Step 4 - Top Sleeve Stripes (True Red)
 Step 5 - Bottom Sleeve Stripes (True Red)



OPTION - STITCH

- STEPS:
 Step 1 - Front Body (Dark Green)
 Step 2 - Back Body (Dark Green)
 Step 3 - Sleeves (Gold)
 Step 4 - Sleeve Stripe (Dark Green)



OPTION - SLUGGER II

- STEPS:
 Step 1 - Front Body (White)
 Step 2 - Back Body (Purple)
 Step 3 - Neck (Electric Green)
 Step 4 - Sleeves (Purple)
 Step 5 - Outside Stripes (White)
 Step 6 - Inside Stripe (Electric Green)

HOME PLATE

Jersey: 7D7S2XU (Adult) \$68.00
 7D7DPXU (Adult) \$55.00
 7D7DPGU (Youth) \$49.00

STEPS:

- Step 1 - Body (Royal)
- Step 2 - Sleeves / Neck (Burnt Orange)
- Step 3 - Piping / Chevron 2 & 4 (Burnt Orange)
- Step 4 - Chevron 1 & 3 (White)

Shown with New 739LGMP Pant

See page 47 for style and pricing details.



SUM7D3

Jersey: 7D7S2XU (Adult) \$68.00
 7D7DPXU (Adult) \$55.00
 7D7DPGU (Youth) \$49.00

STEPS:

- Step 1 - Body (Black)
- Step 2 - Neck / Sleeves / Upper Insert (Gold)
- Step 3 - Piping (White)

Shown with 738LGXK Pant

See page 47 for style and pricing details.





STRIKE ZONE

Jersey: 7D7S2XU (Adult) \$68.00
 7D7DPXU (Adult) \$55.00
 7D7DPGU (Youth) \$49.00

STEPS:

- Step 1 - Body (Purple)
- Step 2 - Sleeves & Neck (Purple)
- Step 3 - Curved Line Insert (White)
- Step 4 - Side Insert - Pattern (Digital Camo)
 - Pattern Color 1 - (Purple)
 - Pattern Color 2 - (Gold)
 - Pattern Color 3 - (Black)

Shown with 738LGXK Pant

See page 47 for style and pricing details.



BASE

Jersey: 7D7S2XU (Adult) \$68.00
 7D7DPXU (Adult) \$55.00
 7D7DPGU (Youth) \$49.00

STEPS:

- Step 1 - Body - Pattern (Camo-Kaze)
 - Pattern Color 1 - (Stealth)
 - Pattern Color 2 - (Baseball Grey)
 - Pattern Color 3 - (Black)
- Step 2 - Sleeves / Neck - Pattern (Solid)
 - Pattern Color 1 - (Black)
 - Pattern Color 2 - (N/A)
 - Pattern Color 3 - (N/A)

Shown with 7S4DBXK Pant

See page 47 for style and pricing details.

LOYALTY

Jersey: 7D7S2XU (Adult) \$68.00
7D7DPXU (Adult) \$55.00
7D7DPGU (Youth) \$49.00

STEPS:

- Step 1 - Body, Sleeves and Unity Pattern (True Red)
 - a) WORD 1 - (COMPETE)
 - b) WORD 2 - (LEGACY)
 - c) WORD 3 - (CHAMPIONSHIP)
- Step 2 - Upper Body (Black)
- Step 3 - Neck (Black)
- Step 4 - Sleeve Stripes (Black)

Shown with 72447LP Pant

See page 47 for style and pricing details.



SUBLIMATION STYLE DETAILS

ADULT TOPS Sizes: S-XXL Oversize: 3XL 10% upcharge for 3XL **Refer to page 1 for fabric content and color options.	745VTXU – Women’s Faux Placket Sublimated Jersey <ul style="list-style-type: none"> •Faux Placket •Set in sleeves •Tapered waist and curved hemmed bottom •4 Side sew label lower left front •“R RUSSELL” right front chest •Imported 	756__XU – Women’s Two Button Placket Sublimated Jersey <ul style="list-style-type: none"> •Two button placket jersey with set in sleeves •Curved hemmed bottom •4 Side sew label lower left front • “R RUSSELL” right front chest •Imported
Placements	3, 6, 6L, 7, 8, 9, 10, 11, 32, 35, BN	3, 6, 7, 8, 9, 10, 11, 32, 35, BN
Decoration Type	Sublimation *Normal Twill charges will apply.	Sublimation
Decoration Pricing	Four locations included in the price \$5.00 charge for each additional decoration placement \$5.00 additional charge for player name	

Fabric Options	VT	S2	DP
	92% polyester 8% spandex	94% polyester 6% spandex	100% polyester

PRICING					
ADULT JERSEYS	Description	Sizes	VT	S2	DP
745VTXU	Women’s Faux Placket Sublimated Jersey	Sizes: S-XXL Oversize: 3XL 10% upcharge for 3XL	\$106.00	N/A	N/A
756S2XU	Women’s Two Button Placket Sublimated Jersey		N/A	\$68.00	\$56.00

SUBLIMATION STYLE DETAILS

ADULT Jersey Sizes: S-XXL Oversize: 3XL 10% upcharge for 3XL **Refer to page 1 for fabric content and color options.	7D6_XU – Women’s Semi-Racer Back Sublimated Jersey <ul style="list-style-type: none"> •Semi-racer back construction for better range of motion •Two needle construction armhole and straight bottom •4 side sew label lower left front •“R RUSSELL” right front chest •Imported 	7D7_XU – Women’s Raglan Sleeve Sublimated Jersey <ul style="list-style-type: none"> •Raglan Sleeves •Self material mitered V-neck •4 Side sew label lower left front •“R RUSSELL” right front chest •Imported
Placements	3, 6, 7, 8, 9, 10, 11, BN	3, 6, 7, 8, 9, 10, 11, 32, 35, BN
Decoration Type	Sublimation	Sublimation
Decoration Pricing	Four locations included in the price \$5.00 charge for each additional decoration placement \$5.00 additional charge for player name	
YOUTH Jersey Sizes: S-XL **Refer to page 1 for fabric content and color options.	7D6DPGU – Girls Semi-Racer Back Sublimated Jersey <ul style="list-style-type: none"> •Semi-racer back construction for better range of motion •Two needle construction armhole and straight bottom •4 side sew label lower left front •“R RUSSELL” right front chest •Imported 	7D7DPGU – Girls Raglan Sleeve Sublimated Jersey <ul style="list-style-type: none"> •Raglan Sleeves •Self material mitered V-neck •4 Side sew label lower left front •“R RUSSELL” right front chest Imported
Placements	3, 6, 7, 8, 9, 10, 11, BN	3, 6, 7, 8, 9, 10, 11, 32, 35, BN
Decoration Type	Sublimation	Sublimation
Decoration Pricing	Four locations included in the price \$5.00 charge for each additional decoration placement \$5.00 additional charge for player name	

Fabric Options	DP	S2
	100% polyester	94% polyester 6% spandex

PRICING				
ADULT JERSEYS	Description	Sizes	DP	S2
7D6_XU	Women’s Semi-Racer Back Sublimated Jersey	Sizes: S-XXL Oversize: 3XL 10% upcharge for 3XL	\$51.00	\$56.00
7D7_XU	Women’s Raglan Sleeve Sublimated Jersey		\$55.00	\$68.00
YOUTH JERSEYS	Description	Sizes	DP	S2
7D6_GU	Girls Semi-Racer Back Sublimated Jersey	Sizes: S-XL	\$44.00	N/A
7D7_GU	Girls Raglan Sleeve Sublimated Jersey		\$49.00	N/A

+ UNIFORM
BUILDER



SPECIAL ORDER

WOMEN'S FAUX PLACKET PULLOVER JERSEY

7S8VTCS - VT Cloth

\$105.00

Sizes: S-XXL Oversize: 3XL

- Faux placket pullover jersey
- Set-in sleeves
- VT Cloth – Body and sleeves
- 72 Cloth – Sleeve and side inserts
- 72 Cloth – Piping
- Curved hemmed bottom with extended tail
- 4 Side sew label lower left front
- "R RUSSELL" right front chest
- Imported

Options:

Self-material name plate	\$8.00
ID Tags	\$4.00
+2" Body length	\$4.00
+4" Body length	\$7.00
+6" Body length	\$8.50
+1" Sleeve length	\$4.00
+2" Sleeve length	\$4.00
-1" Sleeve length	\$4.00
-2" Sleeve length	\$4.00

Decoration Type:

Screen Print, Embroidery, Twill

Decoration Placements:

3, 6, *7N, 8, 9, 10, 11, 32, 35, *BN

*Screen Print not available for placement #7N

*Screen Print only available for placement #BN

Notes:

10% Upcharge for 3XL



SPECIAL ORDER

STEPS

JERSEY	AS SHOWN
Step 1: Body	Royal
Step 2: Sleeve inserts	True Red
Step 3: Side inserts	True Red
Step 4: Piping	White



WOMEN'S BUTTON FRONT JERSEY

737VTCC - LG Cloth

\$96.00

Sizes: S-XXL Oversize: 3XL

- Full button front
- 1 3/8" placket width
- Contrast raglan sleeves with modified sleeve length
- Tapered waist
- Back panel wraps to front with no side seam
- Curved hemmed bottom
- 4 Side sew label lower left front
- "R RUSSELL" logo center back neck
- Imported

Options:

Name plate	\$8.00
ID Tags	\$4.00
1/8" Braid around neck/down front	\$12.00
1/2" Braid around neck/down front	\$13.00
1/2" Braid on neck edge	\$10.00
1/8" Braid 1" from sleeve end	\$8.00
1/2" Braid 1" from sleeve end	\$9.00
1/2" Braid on sleeve end	\$9.00
+ 1" Sleeve length	\$4.00
+ 2" Sleeve length	\$4.00
+ 2" Body length	\$4.00
+ 4" Body length	\$7.00
+ 6" Body length	\$8.50

Decoration Type:

Screen Print, Embroidery, Twill

Decoration Placements:

3, 6, *7, 8, 9, 10, 11, 32, 35, *BN

*Screen Print not available for placement #7

*Screen Print only available for placement #BN

Notes:

Custom Pant hook-ups: 724—LP

Stock Pant hook-ups: 72447XK and 7S4DBXK

10% Upcharge for oversize 3XL



STEPS

JERSEY

AS SHOWN

Step 1: Body

Navy

Step 2: Sleeves

GT Gold



WOMEN'S SLEEVELESS BUTTON FRONT JERSEY

740VTCT – VT Cloth

\$90.00

Sizes: S-XXL Oversize: 3XL

- Full button front
- Sleeveless
- Curved hemmed bottom
- 4 Side sew label lower left front
- "R RUSSELL" logo center back neck
- Imported

Options:

ID Tags	\$4.00
Name plate	\$8.00
1/8" Braid around neck/down front	\$12.00
1/2" Braid around neck/down front	\$13.00
1/2" Braid on neck edge	\$10.00
1/8" Braid on armhole opening	\$8.00
1/2" Braid on armhole opening	\$9.00
+ 2" Body length	\$4.00
+ 4" Body length	\$7.00
+ 6" Body length	\$8.50

Decoration Type:

Screen Print, Embroidery, Twill

Decoration Placements:

3, 6, *7, 8, 9, 10, 11, *BN

*Screen Print not available for placement #7

*Screen Print only available for placement #BN

Notes:

Custom Pant hook-ups: 724—LP

Stock Pant hook-ups: 72447XK, 7S4DBXK

10% Upcharge for oversize 3XL



SPECIAL ORDER

STEPS

JERSEY

AS SHOWN

Step 1: Body

White



WOMEN'S LOW RISE ZIPPER PANT

727LGLP – LG Cloth

\$80.00

Sizes: XS-XXL Oversize: 3XL

- Contrasting side inserts with 1/8" piping down sideseam
- 2" knit elastic waistband with belt loops and tunnels
- Two snap closure with brass zipper and two set-in back pockets
- Double lined knees
- Standard Inseam: 26"
- "R RUSSELL" back left hip
- Imported

Options:

Omit belt loops	N/C
ID Tags	\$4.00
+1" Front/back rise	\$5.00
+2" Front/back/rise	\$8.50
+1" Seat width	\$5.00
+2" Seat width	\$8.50
+1" Inseam	\$4.00
+2" Inseam	\$4.00
+3" Inseam	\$7.00
+4" Inseam	\$7.00
+5" Inseam	\$8.50
+6" Inseam	\$8.50
+7" Inseam	\$10.00
+8" Inseam	\$10.00
+9" Inseam	\$10.00
+10" Inseam	\$10.00
-1" Inseam	\$4.00
-2" Inseam	\$4.00
-3" Inseam	\$4.00
-4" Inseam	\$4.00
-5" Inseam	\$4.00
-6" Inseam	\$4.00
-7" Inseam	\$4.00
-8" Inseam	\$4.00
-9" Inseam	\$4.00
-10" Inseam	\$4.00
Hemmed bottom without elastic	\$4.00

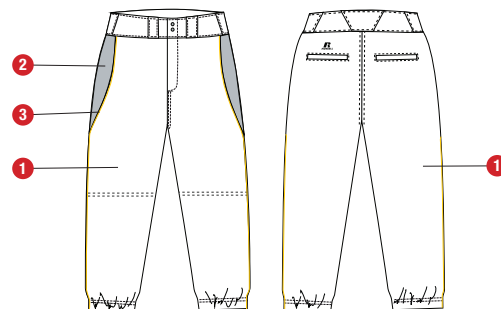
Notes:

10% Upcharge for oversize 3XL



STEPS

PANT	AS SHOWN
Step 1: Body	Baseball Grey
Step 2: Side inserts	Navy
Step 3: Piping	GT Gold



WOMEN'S LOW RISE ZIPPER FLY FRONT PANT

72447LP - 47 Cloth	\$100.00
72453LP - 53 Cloth	\$100.00
724LGLP - LG Cloth	\$75.00

Sizes: XS-XXL Oversize: 3XL

- 2" elastic waistband with belt loops
- Two snap closure with brass zipper
- Two set-in back pockets
- Double lined knees
- Elastic hemmed bottoms
- Standard inseam 26"
- "R RUSSELL" logo back left hip
- Imported

Options:

Omit belt loops	N/C
ID Tags	\$4.00
+1" Front/back rise	\$5.00
+2" Front/back/rise	\$8.50
+1" Seat width	\$5.00
+2" Seat width	\$8.50
+1" Inseam	\$4.00
+2" Inseam	\$4.00
+3" Inseam	\$7.00
+4" Inseam	\$7.00
+5" Inseam	\$8.50
+6" Inseam	\$8.50
+7" Inseam	\$8.50
+8" Inseam	\$8.50
+9" Inseam	\$8.50
+10" Inseam	\$8.50
-1" thru -9" Inseam	\$4.00
-1" Front/Back rise	\$4.00
-2" Front/Back rise	\$4.00
1/8" Braid down sides	\$6.00
1/2" Braid down sides	\$10.00
1" Braid down sides	\$12.00
1 1/2" Braid down sides	\$15.00
Hemmed leg bottom without elastic	\$4.00
1/8" Braid around tunnels	\$6.00
1/2" Braid around tunnels	\$10.00

Notes:

Stock version: 72447XK
10% Upcharge for oversize 3XL



SPECIAL ORDER

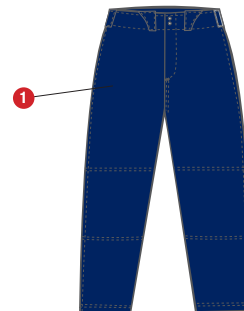
STEPS

PANT

Step 1: Body

AS SHOWN

Baseball
Grey



2017 WOMEN'S BASE HIT

STOCK DECORATED PROGRAM



7R6X2XK (Adult)



7R8X2XK (Adult)
7R8X2GK (Youth)

PROGRAM DATES:

1/9/2017 - 6/26/2017

TURN TIME:

Uniforms will be delivered 12-15 Business Days from order date

NEW ORDERS:

Minimum of 15 pieces per style, color and decoration

DECORATION:

Jerseys:

1 or 2 Color Russcote

Includes Team Name and Front and Back Numbers

Fonts - Team Name Available in Script with Tailsweep, Script, Full Block, Times Bold, Stinger

Numbers Available in Full Block, Times Bold, Stinger

Placements:

Team Name Placements: 7

Numbers: 4" Front Number PL# 10 or 11 and 6" or 8" Back Number PL# 6



The **QUICK** Service Provider For
All Your Diamond Needs

FAST. RELIABLE. SERVICE.



**SUBLIMATED QUICK
TURN PROGRAM**

ARRIVES IN 17-20 BUSINESS DAYS

**BASE HIT STOCK
DECORATED PROGRAM**

ARRIVES IN 12-15 BUSINESS DAYS

**QUICK TURN BRAIDED
PANTS PROGRAM**

ARRIVES IN 7-10 BUSINESS DAYS



**CONTACT YOUR RUSSELL TEAM
DEALER FOR PRODUCT AND
PROGRAM DETAILS**



LADY
WILDCATS

PIRATES

STOCK SOFTBALL

RUSSELL ATHLETIC

QUICK TURN BRAID PROGRAM

HIGH QUALITY SOFTBALL PANTS
20 PREMIUM TEAM COLOR BRAID OPTIONS
SHIPS IN 5 WORKING DAYS!!!



SIDE VIEW



BACK VIEW

738LGXK

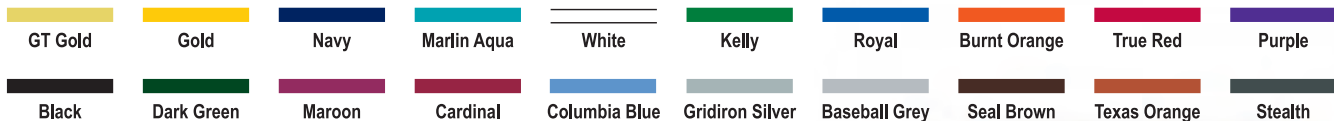
**WOMEN'S KNICKER LENGTH
DIAMOND FIT SOFTBALL PANT**

\$46.00



PROGRAM DETAILS

- 1 Braid Type: 106 - 1/8" - Pattern 0
- Colors: 20 Current Stock Colors



- No minimums but normal up-charges will apply for orders less than 6 units
- Order Entry Catalog: Under the Factory Stock Tab called, "Quick Turn Braid Program"
- Normal discounts and terms apply
- Program Starts 1/18/16

*** PRICES ABOVE ARE RETAIL PRICES THAT
INCLUDE THE PRICE FOR 1/8" BRAID**





WOMEN'S STRETCH FAUX BUTTON FRONT JERSEY

737VTX1 - VT Cloth

\$44.00

92% Nylon/8% Spandex - Colors

92% Polyester/8% Spandex - White

Sizes: S-XXL



- Faux placket pullover jersey with raglan sleeves
- Dri-Power® moisture wicking fabric
- Modified sleeve length
- Tapered waist and curved hemmed bottom
- Back panel wraps to front with no side seam
- 4 Side sew label lower left front
- "R RUSSELL" logo left sleeve
- Imported

Options:

1/8" Braid around neck and down front	\$12.00
1/2" Braid around neck and down front	\$13.00
1/8" Braid 1" up from sleeve ends	\$8.00
1/2" Braid 1" up from sleeve ends	\$9.00
1/2" Braid on sleeve end	\$9.00

Decoration Type:

Screen Print, Embroidery, Twill

Decoration Placements:

6, 7N*, 8, 9, 10, 11, 32, 35, BN*
 Screen Print not available for placement 7N
 Screen Print ONLY for BN

Notes:

Updated sleeve length for freedom of movement
 Faux placket pullover jersey – sewn placket allows for cleaner twill decoration by eliminating gapping between buttons.

COLORS



BG7 Baseball Grey BLK Black CRD Cardinal DGR Dark Green MAR Maroon NAV Navy PUR Purple ROY Royal TRR True Red WHI White



WOMEN'S 2-BUTTON COLOR BLOCK JERSEY

7R6X2XK - X2 Cloth \$20.00
100% Polyester Interlock



Sizes: S-XXL

- Two button placket jersey with set-in sleeves
- Self-material piping in the insert
- HS Cloth in side and upper shoulder insert for more breathability
- Curved hemmed bottom
- Pad print label at inside center back neck
- Neck taping with Russell Athletic branded
- "R RUSSELL" left sleeve
- Imported

Decoration Type:
Screen Print

Decoration Placements:
3, 6, 7, 8, 9, 10, 11, 32, 35, BN

Notes:
Low bleed ink recommended

COLORS





PERFORMANCE V-NECK SOFTBALL JERSEY

7R8X2XK – X2 Cloth \$20.00
 7R8X2GK – X2 Cloth (Youth) \$18.00
 100% Polyester Interlock

Sizes: S-XXL Youth Sizes: S-XL

- Moisture wicking fabric
- V-neck self-material neck
- White front to a color back body to give more of a custom look
- Russell Athletic logo in neck taping
- "R RUSSELL" on left sleeve
- Imported

Decoration Type:
 Screen Print

Decoration Placements:
 3, 6, 7, 8, 9, 10, 11, 32, 35, BN



COLORS



WBK White/Black WBG White/Burnt Orange WCA White/Cardinal WDG White/Dark Green WHM Maroon/White WNA White/Navy WPU White/Purple WRO White/Royal WTR White/True Red



BACK VIEW

SIDE VIEW

**WOMEN'S LOW RISE KNICKER
"DIAMOND FIT SERIES" PANT**

738LGXK - LG Cloth

\$40.00

Sizes: XS-XXL

- Mesh inserts for breathability and better range of motion during play
- Two set-in rear pockets with zipper closure
- Low rise to hit 2" below the natural waist
- Stretch elastic waistband for better movement and silicone gripper to keep your jersey in
- Shaped with belt loops
- Two snap closure with brass zipper
- Two set-in rear pockets with zipper closure
- Double knees
- Open bottom pant hemmed leg opening
- Graded Inseam: XS-17", S-18", M-19", L-20", XL-21", XXL-22"
- "R RUSSELL" logo back left
- Imported

Options:

- 1/8" Braid down sides \$ 6.00
- 1/2" Braid down sides \$10.00
- 1" Braid down sides \$12.00



BG7 Baseball Grey BLK Black NAV Navy WHI White



WOMEN'S LOW RISE KNICKER LENGTH PANT

7S4DBXK - DB Cloth

\$32.00

100% Polyester Double Knit

Sizes: XS-XXL

- Low rise to hit 2" below the natural waist
- Elastic waistband with shaped belt loops
- Two single welt rear pockets
- Two snap closure with brass zipper
- Double knees extending to bottom opening
- Elastic hemmed leg opening
- Inseam length designed to hit under the knee
- Standard Inseam: XS- 17", S- 18", M- 19", L- 20", XL- 21", XXL- 22"
- "R RUSSELL" logo back left hip
- Imported

Options:

- 1/8" Braid down side seam \$ 6.00
- 1/2" Braid down side seam \$10.00
- 1" Braid down the side seam \$12.00
- 1 1/2" Braid down the side seam \$15.00

Notes:

Pant will hook-up to most jerseys



BG7 Baseball Grey BLK Black NAV Navy WHI White



GIRLS LOW RISE KNICKER LENGTH PANT WITH BELT LOOPS

7S3DBGK - DB Cloth (Girls)
100% Polyester Double Knit

\$23.50

Girls Sizes: S-L

- Low rise to hit 2" below the natural waist
- Elastic waistband with belt loops and one single welt rear pocket
- Two snap closure with brass zipper
- Double knees extending to bottom opening
- Elastic hemmed leg opening
- Inseam length designed to hit under the knee
- Standard Inseam: S-L: 17"
- "R RUSSELL" logo back left hip
- Imported

Options:

1/8" Braid down side seam	\$ 6.00
1/2" Braid down side seam	\$10.00
1" Braid down the side seam	\$12.00

Notes:

Pant has one welt rear pocket on left and drawcord in elastic waistband



BG7
Baseball Grey

BLK
Black

NAV
Navy

WHI
White





SHORT SLEEVE PULLOVER

872RVMK - RV Cloth \$40.00
 872RVBK - RV Cloth (Youth) \$35.00
 100% Polyester Woven

Adult Sizes: S-XXL Oversize: 3XL Youth Sizes: S-XL

- Very lightweight breathability fabric
- Moisture wicking capability
- Full cut body with quarter zip neck to go over uniform
- Waist has shock cord with cord lock on wearer's left
- 4 side sew label lower left front
- "R RUSSELL" left sleeve end
- Imported

Decoration Type:
 Embroidery, Twill

Decoration Placements:
 7C, 8, 9, 32, 35, BN, N4



* Youth is only available in these colors



LONG SLEEVE PULLOVER

875QXMK - QX Cloth
100% Polyester

CLOSEOUT: \$32.00

Sizes: S-XXL Oversize: 3XL

- Dri-Power® moisture wicking fabric
- Full cut body with quarter zip neck
- Body and sleeves, 100% Polyester with mechanical stretch
- Underarm inserts, upper back inserts, and sleeve binding (100% Polyester with mechanical stretch)
- Waist has shock cord with cord lock on wearer's left
- 4 side sew label lower left front
- 3/8" stretch binding at sleeve end
- "R RUSSELL" center back neck
- Imported

Decoration Type:

Screen Print, Embroidery, Twill

Decoration Placements:

1, 3, 6, 7, 7C, 8, 9, 10, 11, 32, 35, 36, BN

INVENTORY ONLY



DUGOUT JACKET

814LRMK - LR Cloth **CLOSEOUT: \$75.00**
100% Texturized Nylon Polyester Fill Lining

Sizes: S-XXL Oversize: 3XL

- Water resistant
- Full snap front (covered metal snaps)
- Polyester fill diamond quilted lining
- Raglan sleeves
- 1/8" contrast start and stop piping at front and back raglan seams
- Contrasting side panels
- Solid rib knit collar, cuff and bottom band
- Single welt front pockets
- "R RUSSELL" center back neck
- Imported

Decoration Type:

Embroidery, Twill

Decoration Placements:

3, 7, 8, 9, 32, 35

INVENTORY ONLY





"R" Russell logo color is tonal as shown in image.



ADJUSTABLE BASEBALL BELT

BBBELTA – (Adult)	\$7.00
BBBELTY – (Youth)	\$7.00

Sizes: OSFA; Adjustable 32"-46" (Adult), Adjustable 18"-32" (Youth)

- Dri-Power® moisture wicking fabric
- Full cut body with quarter zip neck
- Body and upper sleeves, 100% polyester with mechanical stretch
- Lower sleeve inserts, back inserts, and sleeve end (100% Polyester mesh with mechanical stretch)
- Waist has shock cord with cord lock on wearer's left
- 4 side sew label lower left front
- "R RUSSELL" center back neck
- Imported

Notes:

Reduced width for a better fit on youth baseball pants



RUSSELL ATHLETIC PERFORMANCE SOCKS



NEW



SHOE SIZE			
SIZE	YOUTH	WOMEN'S	MEN'S
S	3Y-5Y		
M	5Y-7Y	4-6	6-8
L		6-10	8-12
XL		11-13	12-15

RUSSELL "P & R" CREW SOCK RTS01C1

\$8.50 per pair

- Sold in packs of single packs
- 92% Polyester; 6% Rubber; 2% Spandex – White
- 84% Polyester; 10% Nylon; 5% Rubber; 1% Spandex – Colors
- 11 Color offerings
- Moisture management
- Arch support
- Reinforced toe
- Mesh on top of foot for ventilation
- Half cushion sole
- Made in China

COLOR OFFERING

- UUA** Black/White/Gray
- ATJ** Burnt Orange/White/Black
- CWB** Cardinal/White/Black
- DHB** Dark Green/White/Black
- ATK** Maroon/White/Stealth
- ATF** Navy/White/Stealth
- ATH** Purple/White/Stealth
- RWK** Royal/White/Black
- TWB** True Red/White/Black
- ATI** Watermelon Pink/White/Stealth
- HSK** White/Stealth/Black

SHOE SIZE			
SIZE	YOUTH	WOMEN'S	MEN'S
XS	3-6		
S	5-8		
M		4-6	6-8
L		6-10	8-12
XL		11-15	12-16

COLOR OFFERING

- SVF** Aqua/White
- BWH** Black/White
- BOW** Burnt Orange/White
- CWH** Cardinal/White
- COW** Columbia Blue/White
- DWI** Dark Green/White
- GOB** Gold/Black
- KWH** Kelly/White
- MWH** Maroon/White
- NWH** Navy/White
- PWH** Purple/White
- ROW** Royal/White
- TRW** True Red/White
- WMW** Watermelon Pink/White
- GTK** GT Gold/Black
- XDE** White/Stealth

RUSSELL ALL SPORT SOCK RTS01AS

\$9.00 per pair

- Colors: 84% Polyester, 11% Nylon, 3% Rubber, 2% Spandex
- White: 95% Polyester, 3% Rubber, 2% Spandex
- Sizes XS-XL
- 16 color offering
- Left & right Indicator on foot (All Sport Sock Only)
- Sizing on inside rim of sock
- Moisture management
- Arch and ankle support
- Reinforced toe
- Mesh on top of foot for ventilation
- Half cushion sole
- Sold in retail packaging in pairs; 12 pairs equal dozen

INVENTORY ONLY



RUSSELL CREW SOCK RTS03AQ

\$16.50 per 3-pack

- 57% Polyester, 26% Cotton, 10% Nylon, 6% Rubber, 1% Spandex-White and Colors
- Size M-XL
- 2 color offering
- Moisture management
- Arch support
- Reinforced toe
- Mesh on top of foot for ventilation
- Half cushion sole
- Retail Packaging

COLOR OFFERING

- BWH** Black/White
- XDE** White/Stealth

INVENTORY ONLY

RUSSELL LOW CUT SOCK RTS03MP

\$14.50 per 3-pack

- 54% Polyester, 28% Cotton, 12% Olefin, 5% Rubber, 1% Spandex-White and Colors
- Size M-XL
- 2 color offering
- Moisture management
- Arch support
- Reinforced toe
- Mesh on top of foot for ventilation
- Half cushion sole
- Retail Packaging

COLOR OFFERING

- BWH** Black/White
- XDE** White/Stealth

INVENTORY ONLY

RUSSELL QUARTER SOCK RTS03WP

\$14.50 per 3-pack

- 54% Polyester, 28% Cotton, 12% Olefin, 5% Rubber, 1% Spandex-White and Colors
- Size M-XL
- 2 color offering
- Moisture management
- Arch support
- Reinforced toe
- Mesh on top of foot for ventilation
- Half cushion sole
- Retail Packaging

COLOR OFFERING

- BWH** Black/White
- XDE** White/Stealth

INVENTORY ONLY

NEW

SHOE SIZE			
SIZE	YOUTH	WOMEN'S	MEN'S
XS	3-6		
S	5-8		
M		4-6	6-8
L		6-10	8-12
XL		11-15	12-16

COLOR OFFERING

- BWH** Black/White
- BOW** Burnt Orange/White
- CWH** Cardinal/White
- COW** Columbia Blue/White
- DWI** Dark Green/White
- GOB** Gold/Black
- KWH** Kelly/White
- MWH** Maroon/White
- NWH** Navy/White
- PWH** Purple/White
- ROW** Royal/White
- TRW** True Red/White
- WMW** Watermelon Pink/White
- GTK** GT Gold/Black
- XDE** White/Stealth

RUSSELL ALL SPORT SOCK RTS01A1

\$9.50 per pack

- 88% Polyester, 7% Nylon, 4% Rubber, 1% Spandex
- 15 color offering
- Left & right indicator on foot (All Sport Sock Only)
- Sizing on inside rim of sock
- Moisture management
- Arch and ankle support
- Reinforced toe
- Mesh on top of foot for ventilation
- Half cushion sole
- Sold in retail packaging in pairs; 12 pairs equal dozen

NEW! Odor Management Technology - "Silvadur™"





RUSSELL WOMEN'S DUAL LAYERED LO-RISE SLIDING SHORT

RWL629 - Women's **\$27.00**

SIZES: Women's (XS-XL)
COLOR CODE: BLK, DMP, NAV, ROY, SIG, WHI

- Body: 85% Polyester;15% Spandex; Gusset: 90% Polyester; 10% Spandex
- Dual layered to aid in prevention of abrasions
- Excellent for most contact sports
- Moisture management and antimicrobial properties
- 6" Inseam (XS-L) 6-1/4" (XL)
- 1" "Russell" branded plush elastic waistband
- Imported

INVENTORY ONLY



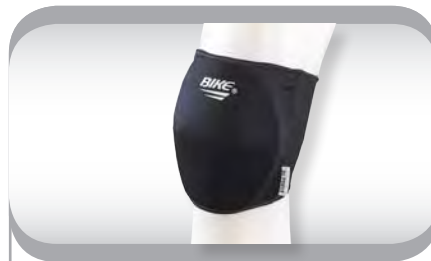
BIKE® ADULT SOFTBALL KNEE PAD

BASBKP - Women's **\$23.00**

SIZES: Adult (NS) Fits Most
COLOR CODE: BLK, WHI

- 42% Polyester, 41% Elastic,17% Rayon
- Pull-on sleeve construction excellent for sliding
- Provides side and frontal knee protection with 3/8" neoprene padding
- Sold in single packs only

INVENTORY ONLY



BIKE® ADULT CONTOURED KNEE PAD

BAKP75 - Adult **\$12.50**

SIZES: Adult (XS- L)
COLOR CODE: BLK, WHI

- Contoured design for multi-sport use
- 100% Polyester outer covering
- 7¼" length
- New! Dri-Power® moisture wicking lining
- 3/8" foam pad, plus ¼" urethane padding
- Sold in pairs
- REPLACES ORIGINAL STYLE 7275
- Minimum order quantity 2

INVENTORY ONLY



RUSSELL ATHLETIC® 3" WRIST BAND

RAWB15 - Adult **\$8.50**

SIZES: NS

COLOR CODE: BLK, CBU, C03, CRD, DGR, DMP, GAT, MAR, NAV, ROY, TRR, WHI

- **DMP Inventory Only**
- Expandable knitted construction that allows sweat to be absorbed
- Embroidered Russell® branded logo
- Sold in pairs



RUSSELL ATHLETIC® 2" HEADBAND

RAHB10 - Adult **\$10.00**

SIZES: NS

COLOR CODE: BLK, CBU, C03, CRD, DGR, DMP, GAT, MAR, NAV, ROY, TRR, WHI

- **DMP Inventory Only**
- Expandable knitted construction that allows sweat to be absorbed
- Embroidered Russell® branded logo

SIZES

	XS	S	M	L	XL
RWL629 - Waist Size	22-24"	24-26"	28-30"	32-34"	34-36"
BAKP75 - Knee Circumference	10-13"	10-13"	14-15"	15-17"	



SPRING 17 SOFTBALL

Color & Fabrics3

SOFTBALL

WOMEN'S LINE DRIVE

745 Single14
 745 Stadium12
 745 SUM73613
 745 Williamsport Razzle11
 746VTMT10
 756 Curve Ball17
 756 Hit and Run16
 756 Option-Ground Rule15
 7D7 Home Plate19
 7D7 Option-Triple Crown20
 7D7 SUM7D318
 Coastal Story6-7
 Line Drive Program8-9
 Line Drive Style Details21
 Softball Intro4-5

WOMEN'S SUBLIMATION

745 Base30
 745 Classic Double30
 745 Curve Ball28
 745 Cut Off32
 745 Hit and Run29
 745 Loyalty31
 745 Option27
 745 Single31
 745 Slider31
 745 Splitter28
 745 Stadium26
 745 SUM73629
 745 SUM7B932
 745 Williamsport Razzle26
 756 Base36
 756 Curve Ball35
 756 Hit and Run36
 756 Loyalty37
 756 Option34
 756 Splitter35
 756 Stadium33
 756 Williamsport Razzle33
 7D6 Ace37
 7D6 Base39
 7D6 Grand Slam40
 7D6 Home Plate38
 7D6 Loyalty40
 7D6 Strike Zone39
 7D6 SUM7D338
 7D7 Ace41
 7D7 Base44
 7D7 Grand Slam41
 7D7 Home Plate43
 7D7 Loyalty45
 7D7 Option42
 7D7 Strike Zone44
 7D7 SUM7D343
 Style Details46-47
 Sublimation Intro22-25

SPECIAL ORDER

72447LP53
 72453LP53
 724LGLP53
 727LGLP52
 737VTCC50
 740VTCT51
 7S8VTCS49

WOMEN'S STOCK

Quick Turn Program55
 Women's Base Hit Program54

STOCK JERSEYS

737VTX158
 7R6X2XK59
 7R8X2GK60
 7R8X2XK60

STOCK PANTS

738LGXK61
 7S3DBGK62
 7S4DBXK61

**BATTER'S TOPS/
OUTERWEAR**

814LRMK64
 872RVBK63
 872RVMK63
 875QXMK64

ACCESSORIES

BBBELTA65
 BBBELTY65
 Socks66

RUSSELL PROTECTIVE

BAKP7567
 BASBKP67
 RAHB1067
 RAWB1567
 RWL62967



SPRING 2017

SOFTBALL

**VISIT TEAM.RUSSELLATHLETIC.COM
TO DESIGN YOUR OWN UNIFORM AND VIEW THE ENTIRE
RUSSELL LINE OF APPAREL AND EQUIPMENT**

**TO CONTACT RUSSELL ATHLETIC
CUSTOMER SERVICE, CALL**

PHONE: 1-888-606-5520
FAX: 1-877-729-4800

**TO ORDER IN-STOCK EXPRESS
STYLES, CALL**

PHONE: 1-888-606-5517
FAX: 1-888-259-6557

**DEALERS ORDER IN-STOCK EXPRESS OR
CUSTOM TEAMWEAR STYLES ONLINE:**

<https://portal.russellathletic.com>



[Facebook.com/Russellathletic](https://www.facebook.com/Russellathletic)



Check out the NEW Russell Athletic
Uniform Builder for iPad.